

XPages From A Different “View”-point



BLUG
Belux Lotus User Group

Paul Withers

Agenda

Introduction

What are my options?

Extending the View Panel Container

Beyond the View Panel – Data Tables

The sky's the limit – Repeat Controls

Summary



BLUG
Belux Lotus User Group

About Me

Domino Developer since R5

Team leader at Intec Systems Ltd  **intec**

Predominantly Notes Client

Attended XPages Course April 2009

First XPages application live June 2009

Tutorials on XPages validation and charts

Guest Speaker on The X Cast Feb 2010



BLUG
Belux Lotus User Group



Originally born
as a user

Converted into
a developer



BLUG
Belux Lotus User Group

Why XPages?

- Easy to build
- Repeat controls
- Web 2.0 look & feel, Dojo
- Repeat controls
- Cross-browser compatible, XPiNC
- Repeat controls
- Custom controls
- Repeat controls



Would You Do This?



BLUG
Belux Lotus User Group

Use The Right Tool For The Job!



BLUG
Belux Lotus User Group

Agenda

Introduction

What are my options?

Extending the View Panel Container

Beyond the View Panel – Data Tables

The sky's the limit – Repeat Controls

Summary



BLUG
Belux Lotus User Group

View Controls

- Main data source is a Notes View
- Contents are mainly columns from view
- Tabular layout, one row per entry
- Standard styling available
- Alternate sorting available
- Lots of out-of-the-box functionality
- Less flexible, e.g. Response documents



View Controls

Current Vacancies

Function

functionToSearch

Country

countryToSearch

Search

| Title | Function | Country | Location | Closing Date | Contact | Ref |
|-------|----------|---------|----------|--------------|---------|-----|
| Title | Function | Country | Location | Closing Date | Contact | Ref |
| | | | | | | |

Design

Source

Properties

Events

Problems (2 errors, 0 warnings, 0 o...)

Outline

Search

View

Data

Display

Style

Font

Background

Margins

All Properties

Name: viewPanel1

Summary:

Width: 100.0 Units: Percent

Visible

At runtime, open selected document using: XPage associated with the document's form

Data Tables

- Main data source more than a Notes View
- Contents are controls, InViewEdit
- Tabular layout, one row per entry
- Some standard styling available
- No alternate sorting available out-of-the-box
- Header and Footer is included
- Greater flexibility within constraints of a table



Data Tables

Previous 1|2|3|4|5 Next

| Status | Control No | Quotation Ref No | Version | Agent | Developer | Job Name | Description |
|--------------------------|-----------------------------|----------------------------------|---------------------------|-------------------------|-----------------------------|---------------------------|---------------------------------|
| [Status] | [ControlNo] | [QuotationRefNo] | [Version] | [Agent] | [Developer] | [JobName] | [Description] |
| | | New Drawing | | | | | Further Info... |

Previous 1|2|3|4|5 Next

Design Source

Properties x Events x Problems (2 errors, 0 warnings, 0 o... x Outline x Search x

Data Table

Display

Style

Font

Background

Margins

All Properties

Name: dataTable1

Width: 100.0 Units: Percent

☒ Visible

☐ Disabled

Iteration

☒ Simple data binding ☐ JavaScript ☐ Advanced

Data Binding

Data source: vwQuotes

Bind to:

Options

Starting index:

Repeat limit: 30

Collection name: quote

Index name:

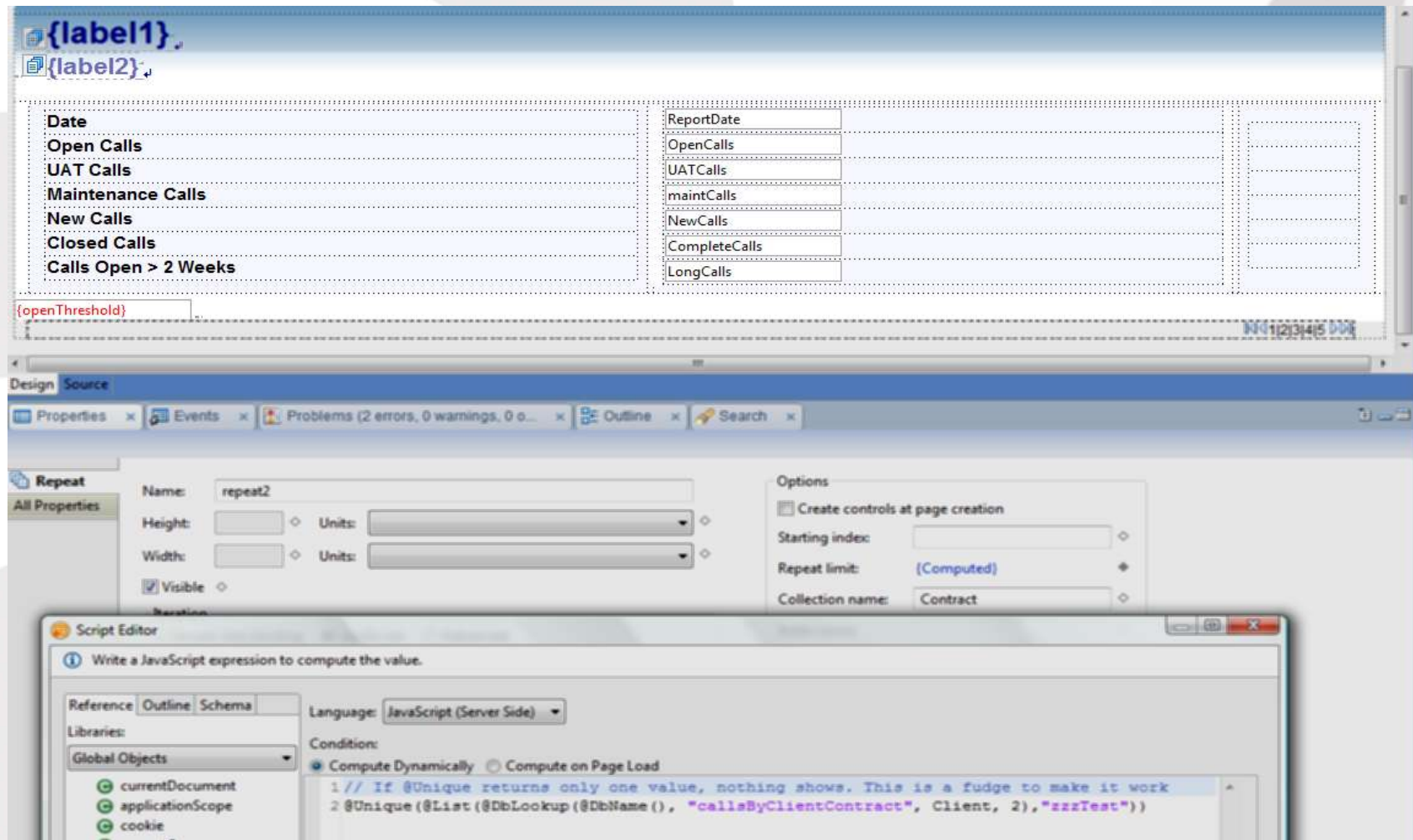


Repeat Controls

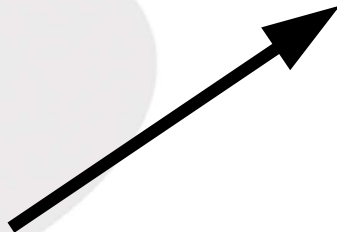
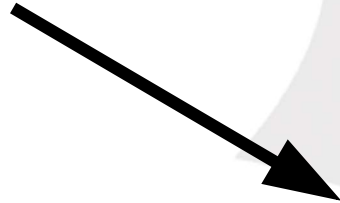
- Main data source more than a Notes View
- Contents are controls, InViewEdit
- Any layout possible
- No standard styling
- No alternate sorting available out-of-the-box
- Header and Footer facets can be defined
- Absolute flexibility, repeats within repeats



Repeat Controls

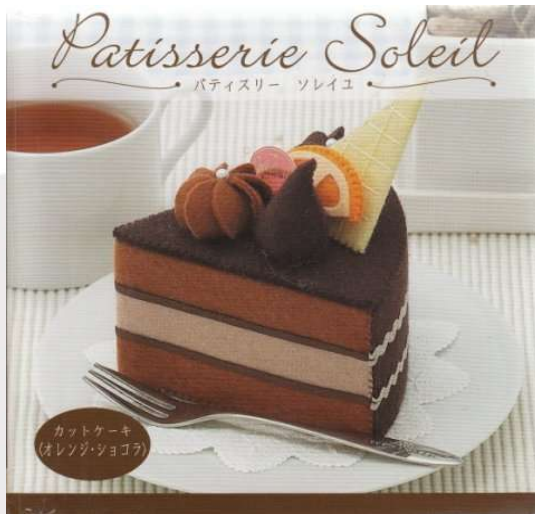


So Which Should I Use?



BLUG
Belux Lotus User Group

Well the View
Control is good...



...but I want
more too



BLUG
Belux Lotus User Group

Agenda

Introduction

What are my options?

Extending the View Panel Container

Beyond the View Panel – Data Tables

The sky's the limit – Repeat Controls

Summary



BLUG
Belux Lotus User Group

What's Possible?

- Customise the standard View Control
- Change the Pager element
- Add controls to a column
 - Link
 - Image
 - Button
- Add additional columns



Demo



BLUG
Belux Lotus User Group

To Summarise

- Combine source & wizards
- type = “Status” value = “Page {0} of {1}”
 - Don't use for lots of pages
- var = “*myVar*” on viewPanel
- value = “” on new column
- Images: `/.ibmxspres/domino/...`
- Bind all columns to actual view column



Agenda

Introduction

What are my options?

Extending the View Panel Container

Beyond the View Panel – Data Tables

The sky's the limit – Repeat Controls

Summary



BLUG
Belux Lotus User Group

What Is A Data Table?

- Table of columns
- Linked to data
 - DominoDocument
 - DominoView
- Blank canvas
- Cells for content



What is a Data Table?

- Header Row
- Footer Row
- No Column Sort option
- No in-built document selection
- View Panel **you** build



Demo



BLUG
Belux Lotus User Group

To Summarise

- Multiple controls in same column
- viewScope & partial refresh for editability
- No sort, but filter
- Search filter needs Full Text Index



Agenda

Introduction

What are my options?

Extending the View Panel Container

Beyond the View Panel – Data Tables

The sky's the limit – Repeat Controls

Summary



BLUG
Belux Lotus User Group

Any Dream Will Do

- Think outside the box
- Think beyond the view
- Think beyond categories
- Think innovative drill-down
- Think alternative navigation techniques
- Think repeats within repeats



You can run IQJam in your company on your Domino server. [Learn how...](#) [Close Message](#)

Home | Leader Board | Profile | Logout | Tags | Help Search... Go

IQJam

There are 107 questions | 251 answers | 57 unanswered questions

All Questions

Recent | Answered | Unanswered | Votes | Recent Answers

<< < Page 1 > ...

Navigation Techniques

IQSpaces

All Questions (107)

- Domino Administration (14)
- Domino Development (50)
- IQJam (20)
- IdeaJam (4)
- Lotus Connections (2)
- Lotus Notes (10)
- Lotus Quickr (2)
- Lotus Sametime (3)
- Lotusphere (2)

Tags

- active directory (2)
- correct answer (1)
- css (2)
- custom controls (2)
- customers (1)
- daos (1)
- datasource bind (1)
- dct (2)
- designer (3)
- domino (3)
- email (2)
- error (3)
- folders (3)
- ideajam (4)
- iphone (3)
- iqjam (7)
- lotus traveler (2)
- mobile (2)
- notes (3)
- quickr (2)
- sametime (4)
- security (2)
- support (2)
- toolkit (2)

Document display options

is there a way to password protect a folder in Lotus notes mailbox so that only the authorised users will have access to that folder..?

2 answers
0 votes
Lotus Notes / Email
Tagged Folders
Manuthachala Moorthy Easwaran - about 21 hours ago

How do you reference a server-side javascript file in an XPages theme?

4 answers
0 votes
Domino Development / XPage
Tagged xpages themes
Paul Withers - about 22 hours ago
Show Correct Answer...

IdeaJam API - what do you want to see?

0 answers
0 votes
IdeaJam / Functionality
Tagged ideajam api json web services
Matt White - about 7 days ago

"Document has been deleted" message in views, yes a Shift-F9 will fix, but how to prevent?

0 answers

Latest Answers

is there a way to password protect a folder in Lotus notes mailbox so that only the authorised users will have access to that folder..?

Lars Berntrop-Bos - about 5 hours ago

How do you reference a server-side javascript file in an XPages theme?

Paul Withers - about 20 hours ago

How do you reference a server-side javascript file in an XPages theme?

Paul Withers - about 20 hours ago



BLUG
Belux Lotus User Group

Useful Links

[Report Broken Link](#)

Business and Finance
Development Resources
eBusiness
Info Sources
Quick Links

Business and Finance Links

| | |
|-------------------|------------------------------------|
| ABC | ABC Online |
| Agra-Food News | Food News |
| BBC News | The BBC News Online |
| Belfast Telegraph | Belfast Daily News |
| Bloomberg | Bloomberg Business News |
| CNN Financial | CNN financial info and articles |
| CNN News | CNN News Online |
| Companies House | Registration of Comany Information |

Useful Links

[Report Broken Link](#)

Business and Finance
Development Resources
eBusiness
Info Sources
Quick Links

Development Resources Links

| | |
|---|--|
| PlanetLotus | Aggregation of Domino Blogs |
| IdeaJam | IBM IdeaJam Site |
| IQJam | IQJam - Domino-Related Questions & Answers (Beta site) |
| Lotus/Domino 8,5 Forum | Lotus/Domino 8,5 Forum |
| XPages Blog | The XPages Blog |
| Intec Wiki | Intec Wiki |
| Best Practice Makes Perfect (Andre Guirard) | Good blog on best practice from the guru |



BLUG
Belux Lotus User Group

Go Beyond Tabular Views

- Let users select categories or sub-categories
- Drill down without categorised views
- Navigate to related documents
- Use layouts appropriate to data
- Consolidate Domino views
- Minimise view index sizes



And dare to dream...



BLUG
Belux Lotus User Group

Agenda

Introduction

What are my options?

Extending the View Panel Container

Beyond the View Panel – Data Tables

The sky's the limit – Repeat Controls

Summary



BLUG
Belux Lotus User Group

So What Have We Learned?

- View Panels have their place
- And can be extended like Data Tables
- Repeat Controls offer greater flexibility
- May require user buy-in
- But can offer new opportunities
 - In Layout
 - In Navigation



Recommended Reading

- XPages Blog (<http://xpagesblog.com>)
- Domino Designer Wiki (<http://lotuswikis.com/>)
- w3schools (<http://www.w3schools.com/>)
- Matt White's Blog (<http://mattwhite.me/>)
- The X Cast (<http://thexcast.net/>)
- Declan Lynch Learning Xpages (<http://www.qtzar.com/blogs/qtzar.nsf/htdocs/LearningXPages.htm>)
- OpenNTF (<http://www.openntf.org/>)
- My blog (<http://hermes.intec.co.uk/intec/blog.nsf>)





Questions & Answers

XPages From A Different “View”-point

Paul Withers

email: pwithers@intec.co.uk

twitter: <http://twitter.com/@PaulSWithers>

blog: <http://hermes.intec.co.uk/intec/blog.nsf>

website: <http://hermes.intec.co.uk>



BLUG
Belux Lotus User Group